

June 2008

North Birmingham News

NEWSLETTER

The Relay Rally

With a last minute substitute for the checkpoint to the Pavillions Garden Centre near Shipley the day started off dry but by nine O'clock the Bank Holiday weather arrived as can be seen in the pictures.



Above—Pat and Ann Davy (Pat is the NBS Area Representative)

John Aston kindly provided some much needed shelter for the day with the use of his van

There was a good turnout with some 25-30 riders passed through during the day coming from Cheshire in the north, Burton on Trent in the East and Worcester in the South to name a few.

Some members managed to pass through collecting their 6th checkpoint sticker.



Left—Three riders from Burton on a Silk, Tri-Greeves and a Honda 400 four

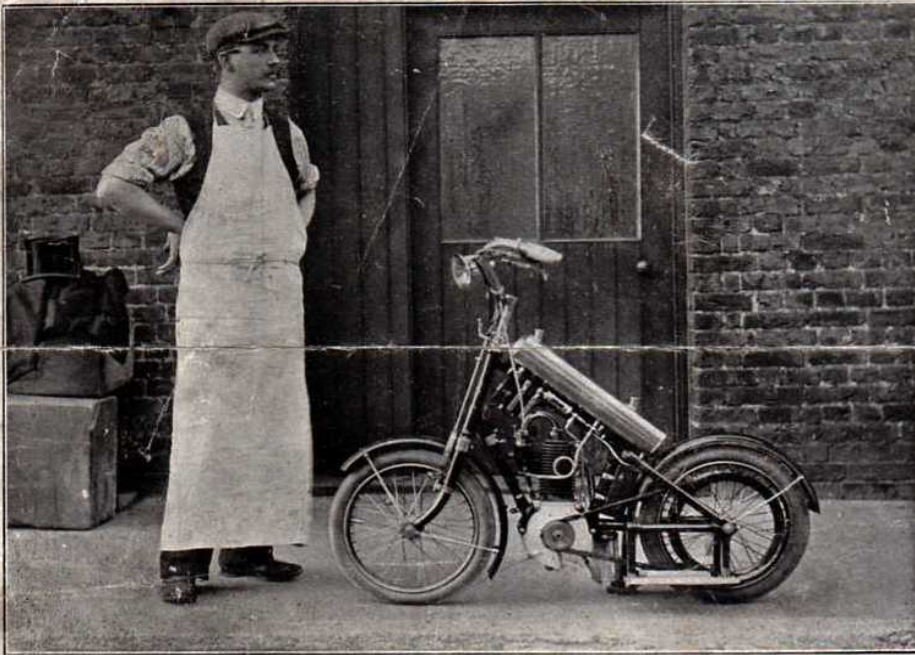
Julian

STOP PRESS:- The speaker for the May club night has had to cancel so we will having a film night instead.



From the Archives

The "MAX" Motor Cycle CLAUDE JOHNSON'S PATENT



THE "Max" Motor Cycle is a light and comfortable "run-about" machine, intended for short distance work at moderate speed, **absolute safety** for the rider being assured.

In the ordinary pattern no seat is provided; the rider assumes a standing position on footplates which are within a few inches of the ground. In this position the rider has the most **perfect control** over the machine, **no vibration or jar** is felt, the greatest possible facility given for mounting and dismounting, the usual feeling of fatigue and *ennui* generally experienced after a run on the ordinary type of motor cycle is avoided, with **absolute security** and **immunity from accident**. The "**Max**" Motor Cycle will start at two miles per hour, and will maintain a maximum speed of fifteen miles per hour. It will climb a hill of 1 in 6 grade at ten miles per hour. It is inexpensive both in petrol and maintenance. Every part is of specially strong construction, and special Palmer Cord Tyres are fitted. It occupies very little space. The footplates fold up, forming a stand for the machine when at rest. As the total weight is small and the centre of gravity low, it can be handled with minimum effort, and **all tendency to "side slip" is avoided**.

The "**Max**" Motor Cycle will appeal to all riders who wish to travel at a **moderate speed** in **absolute comfort and security**, and is particularly suitable for Surveyors, Doctors, Inspectors, Messengers, etc., etc.

For long distance work a special folding and detachable seat can be supplied should the purchaser consider this an advantage.

Trials can be arranged.

Both Manufacturers of Motor Cycles and Agents are invited to communicate with

Mr. LOUIS BURN

(representing Mr. W. CLAUDE JOHNSON, M. Inst. C.E.)

The Studio, Westbourne Street, Lancaster Gate, W.

from whom all particulars may be obtained.

"BRAMBLE" SIDECARS

MEET EVERY REQUIREMENT IN APPEARANCE, COMFORT, UTILITY.



Pat. 14357/13.

We are specialising on our No. 1 Model for 1916. SPECIFICATIONS.—Ash Framing; Steel Panels; Trimmings Leather Cloth; Spring Back and Cushion; Painted and Lined to choice; Four-point Quick Attachments; 5in. Guard; Deep Valance; 26 x 2½ Tyre.

Price £16 : 16 : 0

Or 10 Models supplied complete at £12 : 12 : 0

— Special Models for "H.D." and Spring Frame Machines. —

If you want the best, see the "Bramble" No. 1.

THE BRAMBLE MFG. CO., LTD.,

Coachbuilders to the Trade,

LONDON ROAD, COVENTRY.

London Agents:

Robertsons Motors, Ltd., 157, Great Portland Street, W.

AMAC CARBURETTER



It matters not which machine you ride if you always insist on specifying

AMAC.

Always perfect under all conditions, giving greater

POWER, FLEXIBILITY, and ECONOMY.



Write for Catalogue, Aston Motor Accessories Co., Ltd., Aston Cross, Birmingham.

THE BELT for RUDGE, ZENITH, PHILIPSON, GRADO, BRAMPTON, or ANY GRADUAL GEAR



YOU CANNOT BEAT THE ALLIED BELT

— **ECONOMY** —

is the question of the hour! WHY not study this in connection with your TRANSMISSION? Write at once for our new BOOK OF FACTS, and see how we save you money and give you

ABSOLUTE SATISFACTION.

Now is the time you require an **ALL-WEATHER BELT** THEREFORE WRITE US NOW AND **SAVE MONEY.**

Address all communications to—**The ZILLA PATENT BELT COMPANY, Ltd., 101, Great Western Street, MANCHESTER.**

The Girder Fork Run



We were greeted by a warm sunny start to the Girder Form run with a varied selection of machines joining in the day.

16 riders signed on for the day of which 6 were girder fork machines.

Paul Harris riding a veteran 1914 model U2 Douglas and Peter Ashen riding an early vintage 1916 v-twin Sunbeam led the start of the run from Noel Clarke's along the lanes in the general heading of Ombersley.

A number of riders stopped off en route in Bewdley for an ice cream from Teddy Grays or popped in to one of the many Cafe's.

A few miles after leaving the coffee stop Paul stopped for some routine maintenance to the belt on his machine, which I understand is normal procedure.

A few other riders joined us at the start or for lunch which was great and nobody broke down.



Julian

County Air Ambulance

Over the last year the section has been raising funds for the County Air Ambulance and we were grateful to Arthur Worthington who gave us an extensive insight on the background to the organisation and how it is currently operating at the last club meeting.

Trevor handed over a cheque for £430.00



Burton Parade

Congratulations must go to John Aston for winning "The Best in Show" with his 1960 Greeves 25DB



Eco Bike

Hazel testing out John Aston's latest moped saved from being scrapped. Air and Petrol and she was away !



FORTHCOMING ATTRACTIONS FOR 2008

CLUB NIGHTS	
MAY 28th	Film Night
JUNE 30th	Ride a Bike Night— no meeting
JULY 25th	Fish and Chip Supper
AUGUST 29th	Arrive on Your Bike Night
SEPTEMBER 24th	Talk by Johnny Brittain on life as a trials rider
OCTOBER 29th	Talk by Geoff Brazendale on early vehicle lighting
NOVEMBER 28th	Bring and Buy evening
DECEMBER 26th	No Meeting

CLUB RUNS

DATE	RUN	ORGANISER	Tel No
May 30th - June 1st	The Welsh Weekend	Josie Stanley	01902-607293
June 8th	Josie's Jaunt	Josie Stanley	01902-607293
June 18th	Wrinkly Signpost Hunt	Ian Harris	01952-299118
June 25th	Ride A Bike Night	Frank Ashton	01902-372719
June 29th	Roger's Run	Roger Greening	01562-730464
July 6th	Long Mynd Run	Colin Lloyd	01384-371835
July 9th	Wrinkly Run		
July 20th	Trent Valley Run	Brian Empsall	01543-264968
August 3rd	Breakfast Run	Rob Pell	0121-624-7674
August 17th	Picnic / Concours Run	Peter Ashen	01562-882854
September 7th	Flight of Fantasy Run	Trevor Bull	01905-778917
September 14th	Levis Cup Road Trial	Paul Harris	01902-842732
September 28th	Severn Valley Run	Bill Danks	01562-67103
October 12th	Autumn Run	Andy Briggs	0121-544-5938